

EXPLORE

BOOK NOW

# ST. JOSEPH MUSEUMS FIELD TRIPS

WWW.STJOSEPHMUSEUM.ORG



816-232-8471 - ST. JOSEPH, MO

GLORE PSYCHIATRIC,  
BLACK ARCHIVES, NATIVE  
AMERICAN GALLERIES,  
WYETH-TOOTLE MANSION

# EXPLORE

## *Our History*

### FREQUENTLY ASKED QUESTIONS:



#### *Recommended Ages:*

All of our collections have programming for pre-K to college age and above. Tour recommendations are as follows:

Glore Psychiatric - 5th Grade and Older

Black Archives - 3rd Grade and Older

Native American Galleries - 1st Grade and Older

Wyeth-Tootle Mansion - 1st Grade and Older



#### *What is the cost?*

Group rates for both locations are \$7 per person. 2-3 Comp tickets per tour are included for guides, teachers or bus drivers. Special rates can be discussed for non-profit, school and low-income entities.



#### *How do I book?*

Group tours can be booked online at [www.stjosephmuseum.org/visitus](http://www.stjosephmuseum.org/visitus) or by calling 816-232-8471; email: [kami@stjosephmuseum.org](mailto:kami@stjosephmuseum.org)

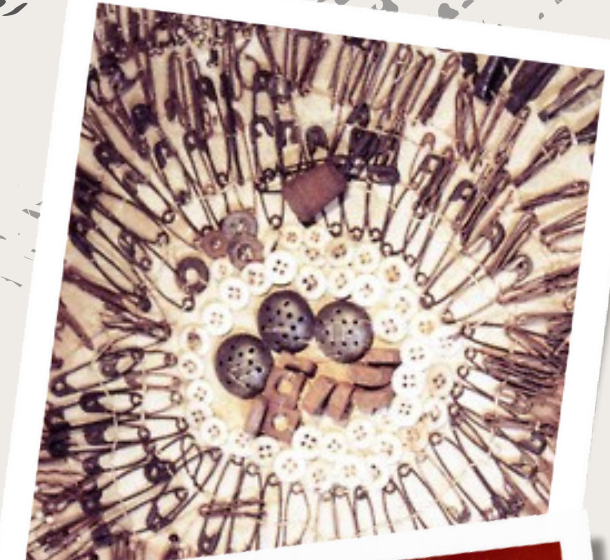


#### *Can you come to me?*

St. Joseph Museums has several programs that can be added to your trip or can come to you. Visit [www.stjosephmuseum.org/experiences](http://www.stjosephmuseum.org/experiences) to see all available programs. Need a custom program? We can do that too! Contact [kami@stjosephmuseum.org](mailto:kami@stjosephmuseum.org) for more information.



Need help with funds for a school bus? Visit <https://freedomfrontier.org/bus-on-us/> to apply for financial assistance. This program provides bus fees and driver fees for schools visiting a historic heritage location in the Midwest.



# PROGRAMS



## Glore Psychiatric

**The Emotional Toolbox** is an in-depth look at stress and burnout, how it changes the brain, the body and your life. All participants make a flower sachet to start their emotional toolbox. This program is available in conjunction with a guided tour of the Glore Psychiatric Museum or can be presented onsite at your location. **The Scavenger Hunt** is a fun and interactive way to explore the museum for your students! This hunt takes you to all 4 floors of the museum and can be added to your group tour at no additional cost, or you can add goodie bags for a fun prize!



## Native American Galleries

We have 2 programs available with our Native American Galleries. In our **Beading Workshop** you will learn about Native American beading techniques, regional identification, and the importance of Native American heritage and culture, while you look at pieces not currently on display! Each participant will learn to loom bead while they bead their own bracelet or keychain to take home. **Native North American** teaches about the culture, heritage and lives of tribes in North America with a focus on culture, resources and everyday lives. Both of these programs are available in conjunction with a guided tour of the Native American Galleries or can be presented on-site at your location. Native North America is also available via Zoom.



## Black Archives Museum

We have several options available with our Black Archives Museum. **Choices of a Missouri Slave** is an in-depth exploration of the choices made by slaves during the time of the Civil War in Missouri and Kansas. Explore some of the choices and consequences on trying to escape slavery in the US. The **Kenneth Clark Doll Study** takes an in-depth look at the Doll Study performed by Kenneth and Mammie Clark in the 1950's that was used in the Brown VS Topeka Board of Education and how it is relevant today. **Jeffery Deroine - From Slave to World Traveler** teaches about the unique and amazing history of Joseph Robidoux's personal slave Jeffery Deroine, how he earned his freedom and became a legend. All Black Archives programming is available in conjunction with a guided tour of the Black Archives Museum or can be presented on-site at your location.

Learn about all of our programming options at [www.stjosephmuseum.org/experiences](http://www.stjosephmuseum.org/experiences)

Need a custom program? Just let us know! With over 200,000 objects and artifacts, we should have something just right for you!

Visit our on-line CatalogIt hub to explore our vast collection: [www.stjosephmuseum.org/research](http://www.stjosephmuseum.org/research)



# Field Trip Permission Slip

Dear Parents,

Our class will be going on a field trip to St. Joseph Museums, Inc.

Date: \_\_\_\_\_

Time: \_\_\_\_\_

Cost of trip: \_\_\_\_\_

Special Notes: \_\_\_\_\_  
\_\_\_\_\_

Please fill out and return the bottom portion of this page by \_\_\_\_\_.

**Thank you!**



# Field Trip Permission Slip

Dear Parents,

Our class will be going on a field trip to St. Joseph Museums, Inc.

Date: \_\_\_\_\_

Time: \_\_\_\_\_

Cost of trip: \_\_\_\_\_

Special Notes: \_\_\_\_\_  
\_\_\_\_\_

Please fill out and return the bottom portion of this page by \_\_\_\_\_.

**Thank you!**



# Glore Psychiatric, Black Archives, Native American Galleries

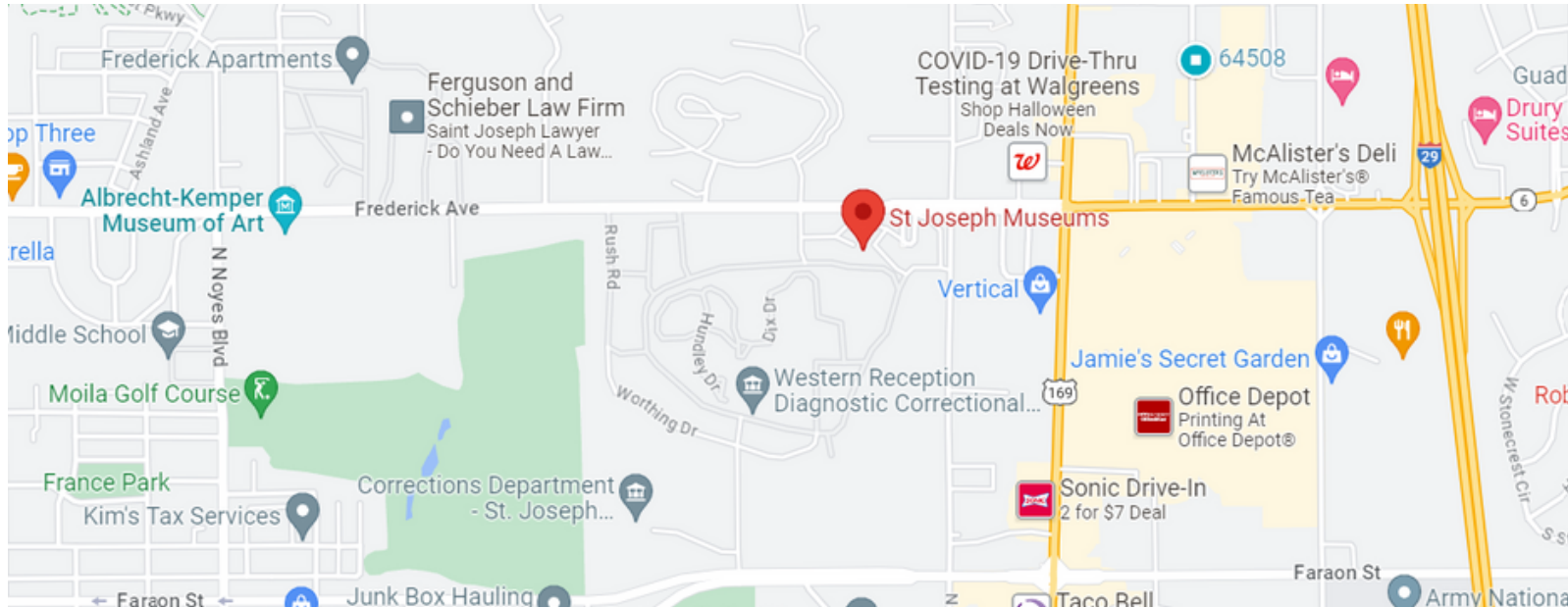
## 3406 Frederick Ave. St. Joseph, MO

**From the South:** Take 29 North to Frederick Ave. (Exit 47). Make a left at the stop light proceed through 4 stoplights (past 36th Street). Destination is on your Left.

**From the North:** Take 29 South to Frederick Ave. (Exit 47). Veer right onto Frederick. Proceed through 4 stoplights (past 36th Street). Destination is on your Left.

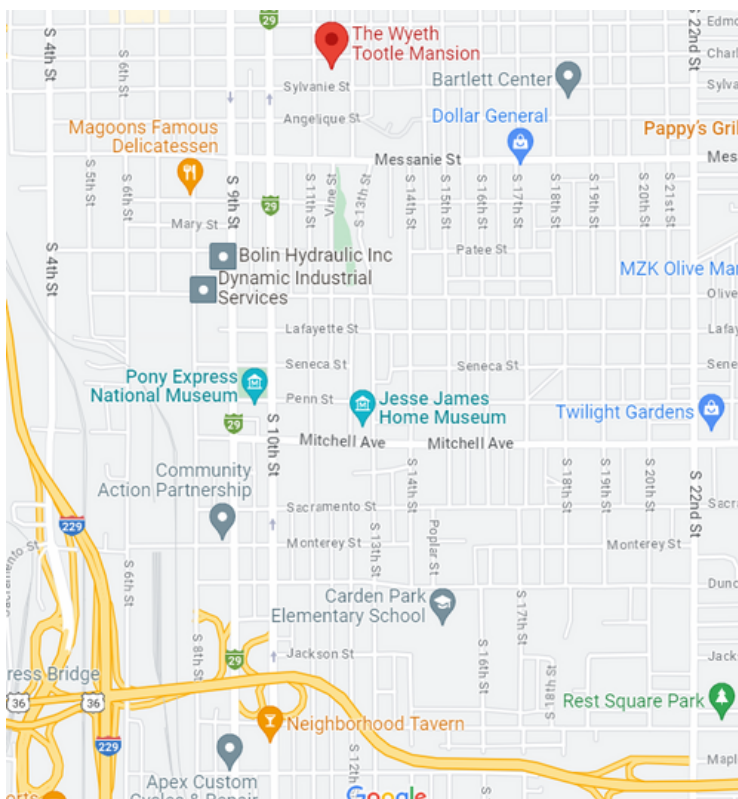
**From the East:** Take 36 West to 29 North; 29 North to Frederick Ave. (Exit 47). Make a left at the stop light proceed through 4 stoplights (past 36th Street). Destination is on your Left.

**From the West:** Take 36 East to 29 North; 29 North to Frederick Ave. (Exit 47). Make a left at the stop light proceed through 4 stoplights (past 36th Street). Destination is on your Left.



## Wyeth-Tootle Mansion

### 1100 Charles Street - St. Joseph, MO



**From the South:** Take 29 North to 36 West. 36 West to 10th Street Exit. Proceed North on 10th Street to Charles. Make a Right on Charles. Destination is on your Right.

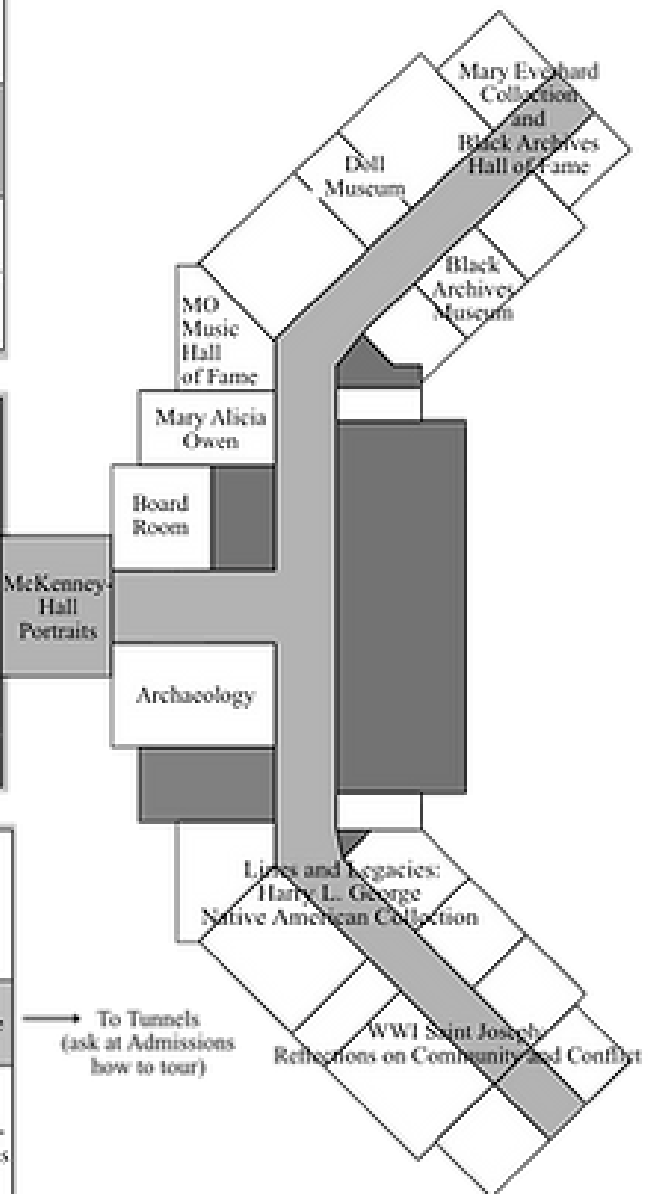
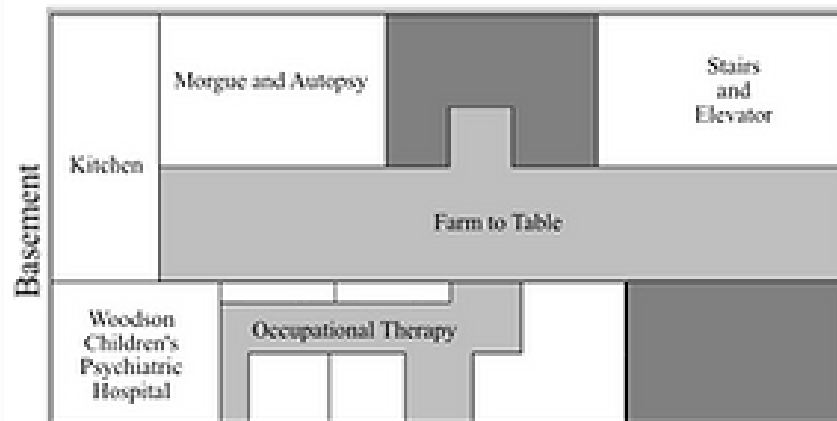
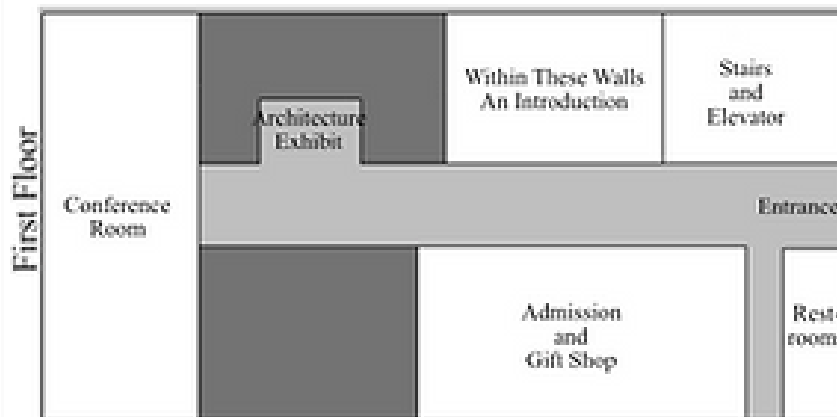
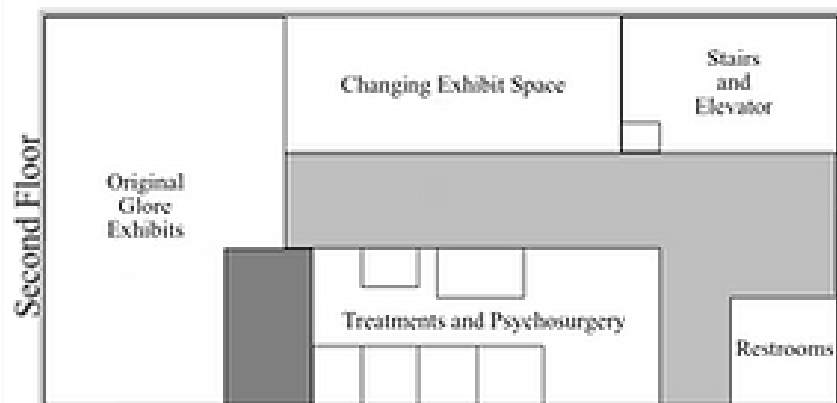
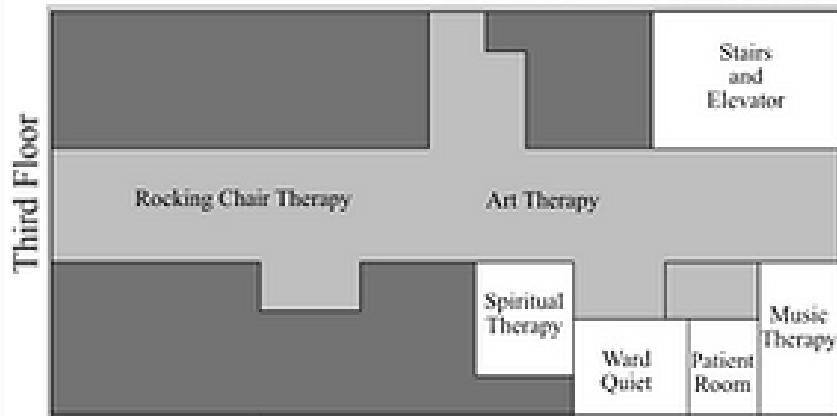
**From the North:** Take 29 South to 36 West. 36 West to 10th Street Exit. Proceed North on 10th Street to Charles. Make a Right on Charles. Destination is on your Right.

**From the East:** Take 36 West to 10th Street Exit. Proceed North on 10th Street to Charles. Make a Right on Charles. Destination is on your Right.

**From the West:** Take 36 East to 10th Street Exit. Proceed North on 10th Street to Charles. Make a Right on Charles. Destination is on your Right.

# Map to the St. Joseph Museums

Glore Psychiatric Museum, Black Archives Museum, Doll Museum,  
and the Native American and History Galleries



## St. Joseph Museums, Inc.

3406 Frederick Avenue

Phone: (816) 232-8471

Fax: (816) 232-8482

Email: [sjm@stjosephmuseum.org](mailto:sjm@stjosephmuseum.org)

Website: [www.stjosephmuseum.org](http://www.stjosephmuseum.org)

### Hours of Operation

10 a.m. - 5 p.m. Monday - Saturday

1 p.m. - 5 p.m. Sunday

### Wyeth Tootle Mansion

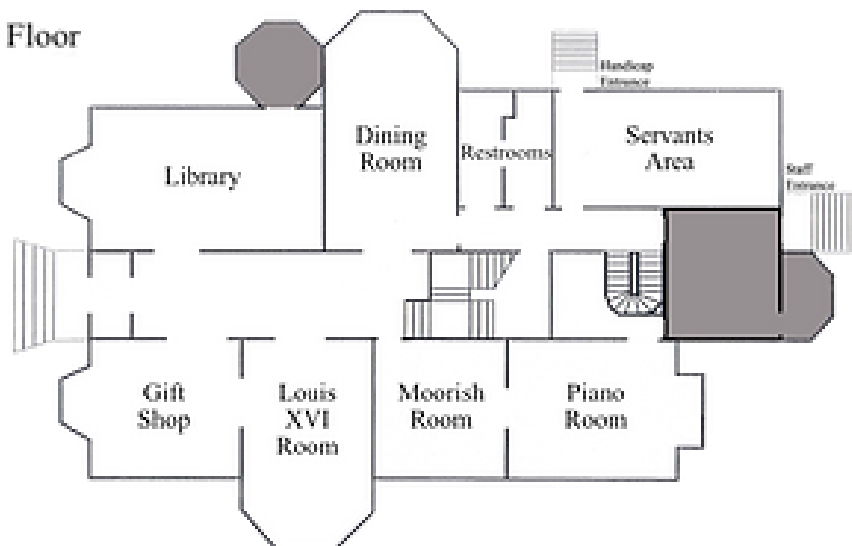
1100 Charles Street

10 a.m. - 4 p.m. Friday & Saturday

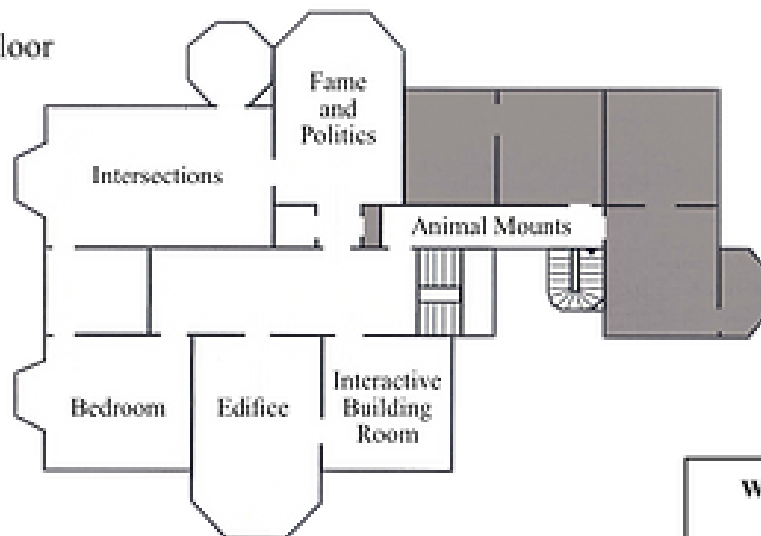
April thru October

# Map to the Wyeth-Tootle Mansion

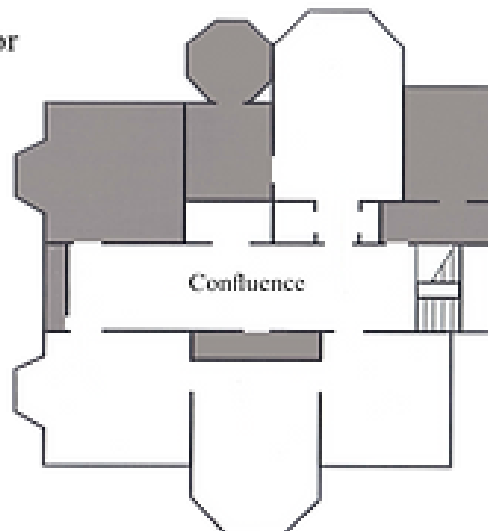
First Floor



Second Floor



Third Floor



## Wyeth-Tootle Mansion

1100 Charles Street  
Friday & Saturday 10 - 4 p.m.  
April thru October

Visit us at our other location:

**St. Joseph Museums, Inc.**

3406 Frederick Avenue

Hours of Operation:

Monday - Saturday 10 - 5 p.m.

Sunday 1 - 5 p.m.

Phone: (816) 232-8471

